



Pet Friendly Close To Gt, Private Back Garden--emerald Isle

South Sound, Cayman Islands

Monthly Rent: CI\$2,500

Listing Type: Condo

Bathrooms: 1

Views: Garden View, Pool View

Parcel: 361H7H1

Type: Condominium / Apartment

Status: Current

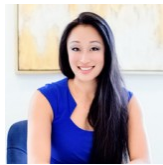
Pets Friendly: Yes

Bedrooms: 1

Block: 15C



PRESENTED BY



LIVIA KWONG

Phone

Email

livia@1503propertygroup.com

PROPERTY DESCRIPTION

This beautifully upgraded 1 bed, 1 bath ground floor corner unit is located in a secure, gated community just minutes from George Town, schools, and all major amenities. The light filled corner unit benefits from extra windows and high ceilings, creating a bright, airy, and inviting space. The upgraded kitchen features modern finishes and flows seamlessly into the open living area, complemented by updated flooring and a stylishly renovated bathroom. Washer/dryer en suite. Step outside to your private, fenced back garden perfect for pets or simply relaxing. Entertain friends or unwind with your morning coffee in your own green space. Just steps from your front door, you'll find the community pool, complete with a shaded gazebo and communal BBQ area ideal for weekend gatherings or cooling off after a long day. This pet-friendly condo offers comfort, privacy, and convenience in one of Caymans most accessible locations. These units are rarely on the rental market. Available July 15 or sooner!