

Savannah / Lower Valley, Cayman Islands

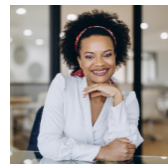
Monthly Rent: CI\$1,000  
Listing Type: Commercial  
Views: Inland

Type: Commercial  
Status: New  
Block: 38C

Parcel: 158



## PRESENTED BY



**GLORIA EBANKS**  
Phone  
Email  
gloria@1503propertygroup.com

## PROPERTY DESCRIPTION

Now Available Commercial Space for Rent at Stonecrest Plaza, Bodden Town Looking for the perfect spot to grow your business? A 350 sq. ft. commercial unit is now available at Stoncrest Plaza, centrally located in the rapidly developing Bodden Town area. Size: 350 sq. ft. Lease Term: 12 months Rent Includes: CAM fees (common area maintenance) Utilities: Tenants responsibility Stonecrest Plaza offers excellent visibility and accessibility for both foot and vehicle traffic, making it an ideal choice for small businesses, professional offices, or boutique services. Location: Budding Bodden Town a growing hub for commerce and community.