



Shoreline Warehouse - 1000 Sq Ft With 20 Ft Ceilings/racking

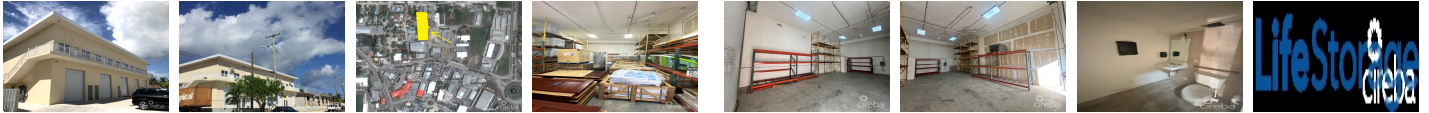
George Town, Cayman Islands

Monthly Rent: CI\$3,650
Listing Type: Commercial
Built: 2020
Views: None

Type: Commercial
Status: Current

Block: 20C

Parcel: 12



PRESENTED BY



HEIDI KISS
Phone
345-623-1400
Email
heidi.kiss@evrealestate.com

PROPERTY DESCRIPTION

Warehouse with Racks. Elevated! Easy, quick access off Eastern Ave. Stop fighting traffic. Just across from CICA and ITC and Parkers! Centrally located at 37 Ashgo Street off Godfrey Nixon Way (Between ALT and Eastern Avenue). This warehouse has a 14' high roll-up hurricane door. Washroom on the ground floor. 1st floor is 7' above sea level. The parking lot is solid concrete with great drainage. Great spot for all types of storage or for a business. Available Feb 1st 2025. Pallet Rack Shelving can be removed if more space is needed. Depending on lease terms and duration, we could also entertain building a mezzanine level with a staircase. NOTE: No food storage or car mechanic shops.